

2023 Proposed Meeting Dates

- **Final 2022 Meeting Date:**
 - Wednesday, **December 7th**, 2022, 1:30 – 3:00 PM
- **2023 Meeting Dates:**
 - Wednesday, **March 1st**, 2023, 1:30 – 3:00 PM
 - Wednesday, **June 7th**, 2023, 1:30 – 3:00 PM
 - Wednesday, **September 6th**, 2023 1:30 – 3:00 PM
 - Wednesday, **December 6th**, 2023 1:30 – 3:00 PM

Collaborative Objective: We share expertise to coordinate goals, amplify resources, track data and advise the City Council on the highest priorities that will strengthen, streamline and align Mesa's education (early learning through post-secondary) and its workforce needs.

Strategic Focus Areas

#1 Early Learning through High School

Priorities

- Equitable access to quality early learning
- Increase graduation rates
- Teacher recruitment & retention
- Clear post-secondary career path for all graduation seniors

#2 Post-Secondary

Priorities

- Graduate workforce-ready students & adults
- Increase post-secondary enrollment through marketing of opportunities
- Help students/families seek technical & financial assistance
- Support Mesa's adults to compete for immediate placement in the workforce

#3 Workforce Development

Priorities

- Affordable & equitable access to upskill, train and educate Mesa's residents
- Improve link between ed pathways & industry needs
- Leverage partnerships, engage residents, business & industry to understand need, provide access & training

Highlighted Performance Metrics

- # of students enrolled in preschool & equitable distribution across programs
- Diversity & equity of early learning staff
- % of on-time HS grad rates
- Drop-out rates for HS serving Mesa families
- Annual averages in Mesa teacher pay/compensation

- Post-secondary enrollment statistics
- Completion percentages in post-secondary degree/certification programs
- Mesa College Promise data
- % of Mesa adults with post-secondary credential

- # of Mesa businesses partnering with HS and post-secondary education
- % of post-secondary grad job placement
- Mesa unemployment rates
- Mesa job demand by industry

Project Summary

Strategic Focus Area	#1 - Early Learning through High School	#2 - Post-Secondary	#3 - Workforce Development
Project	Mesa K-Ready	Mesa College Promise	Workforce Pathway Alignment
Priority Area	<ul style="list-style-type: none"> Provide equitable access to quality early learning for Mesa families. 	<ul style="list-style-type: none"> Ensure all graduating seniors have strong, fundamental education and life skills and have a clear post-secondary career path that aligns passion, professional interest and workforce needs. Increase post-secondary enrollment in Mesa by marketing the variety of post-secondary opportunities. Help students/families seek both technical and financial assistance. 	<ul style="list-style-type: none"> Provide affordable and equitable access to upskill, train and educate Mesa’s residents (student and adults) to respond to the workforce needs of Mesa’s industry now and in the future.

Discussion of Project #1 Action Steps



9.14.22 - Mesa Education and Workforce Development Roundtable

Mesa K-Ready Reflection



- **Program evaluation challenges:**
 - Lack of control group
 - MPS working with ASU on potential for case study
 - MPS working on tracking students through student information management system
- **Program Areas of Focus:**
 - Increase % of 3-4 year olds exposed to curriculum and kinder-readiness strategies
 - Promote early literacy
 - Multi-generational impact

Early Childhood Data

	Total # of Children under the age of 5	Children under the age of 5 living in poverty	% of children living in poverty
City of Mesa	33,666	7,627	22.6%
State of Arizona	433,968	88,674	20%

Source: American Community Survey, 2020 5-year estimate

	2021 3rd Grade Reading Proficiency
City of Mesa	35.35%
State of Arizona	35%

Source: Arizona Department of Education, 2021 AZM2 results

	Child Care Centers
City of Mesa	165

Source: Arizona Department of Health and Safety (2022)

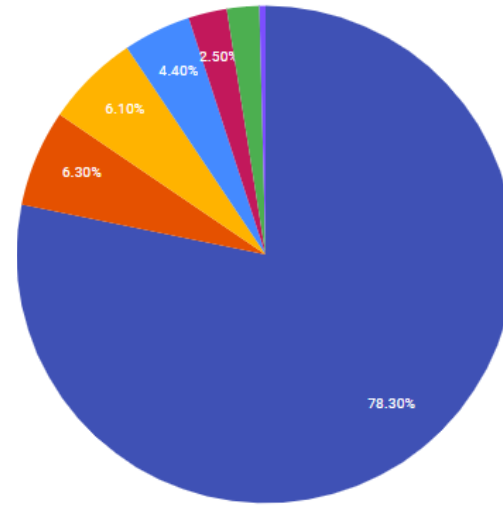
	<u>Need</u> (Children 5 & under with all parents in labor force)	<u>Availability</u> (childcare slots offered by state-recognized providers)	<u>Gap</u> (Children who may need care but don't have access to a nearby provider with available slots)	
City of Mesa	24,497	15,589	4,027	17%
State of Arizona	304,180	234,280	76,740	25%

Source: Read On Arizona (data from Bipartisan Policy Center), Arizona Department of Health and Safety (2022), American Community Survey, 2020 5-year estimate

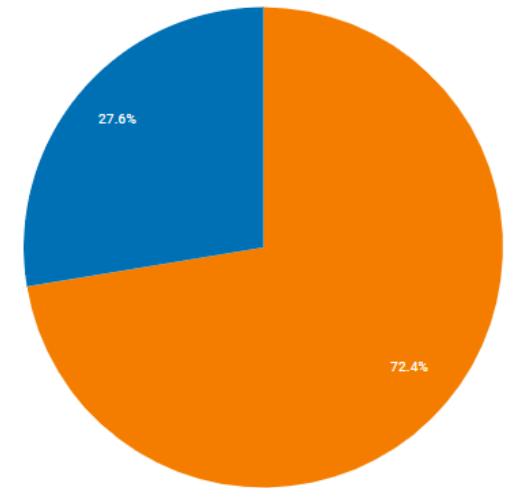
Community Data

- White
- Two or more races
- Some other race
- Black
- Ak native/amer. ind.
- Asian
- Pacific is./hawaiian

Community Demographics: Race

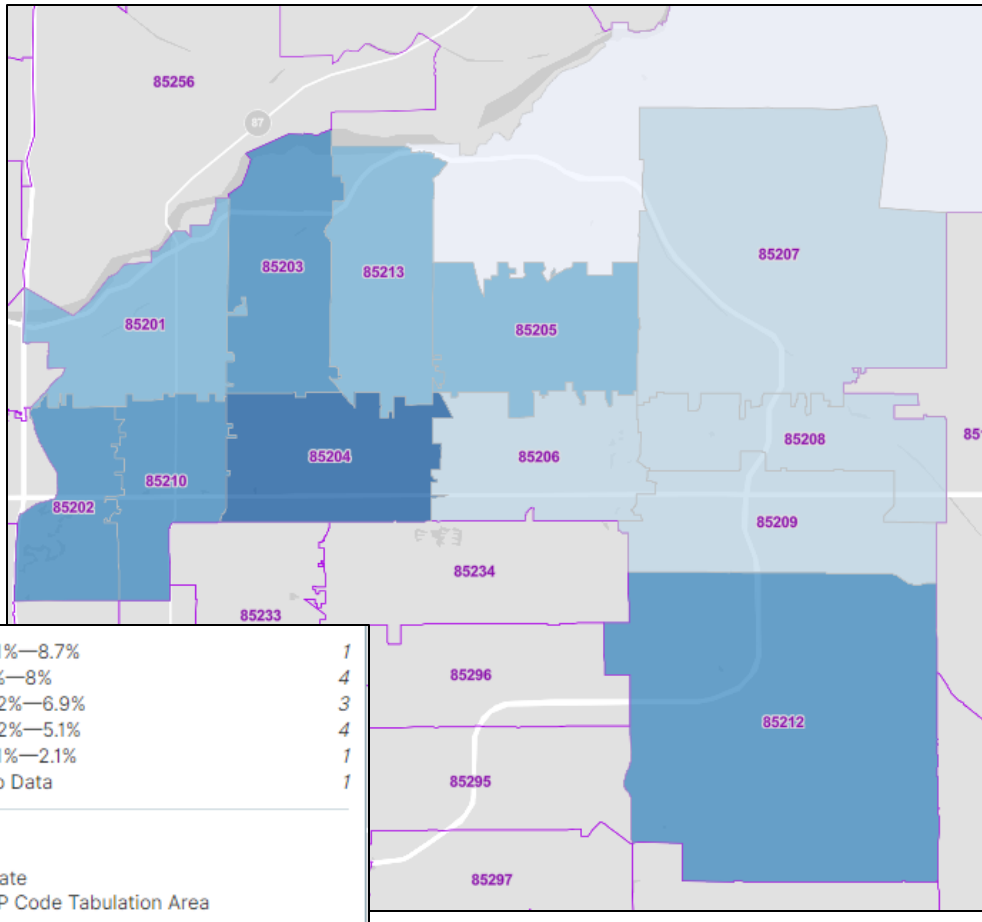


Community Demographics: Ethnicity

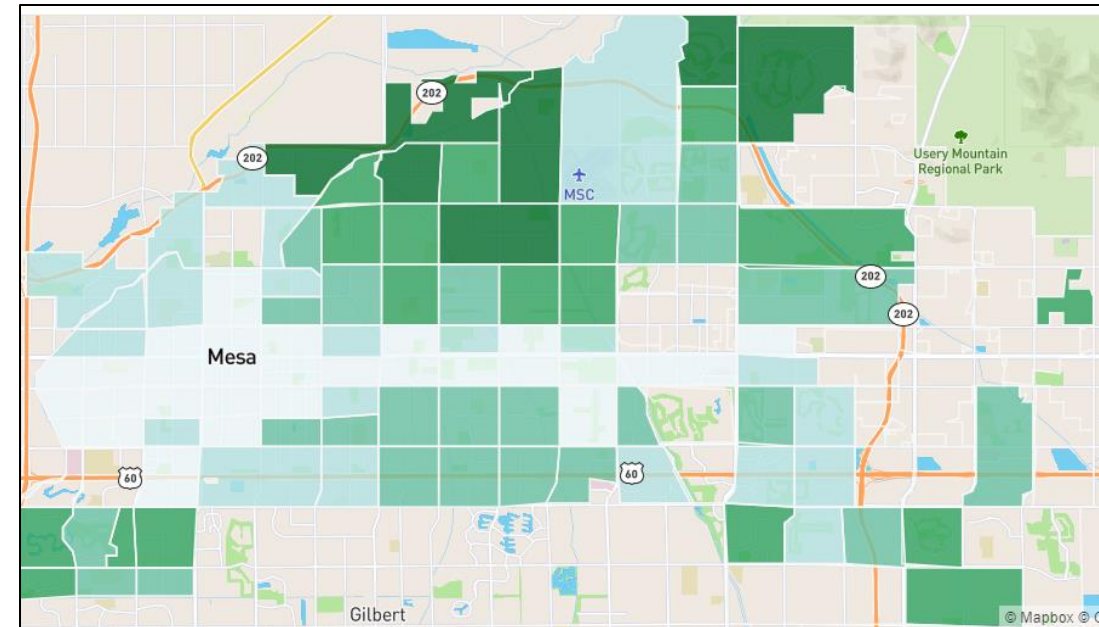


- Not Hispanic or Latino
- Hispanic or Latino (of any race)

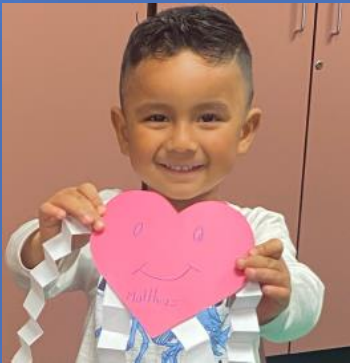
% of total population under 5 years by zip code



Median Household Income by Census Tract



Next steps...

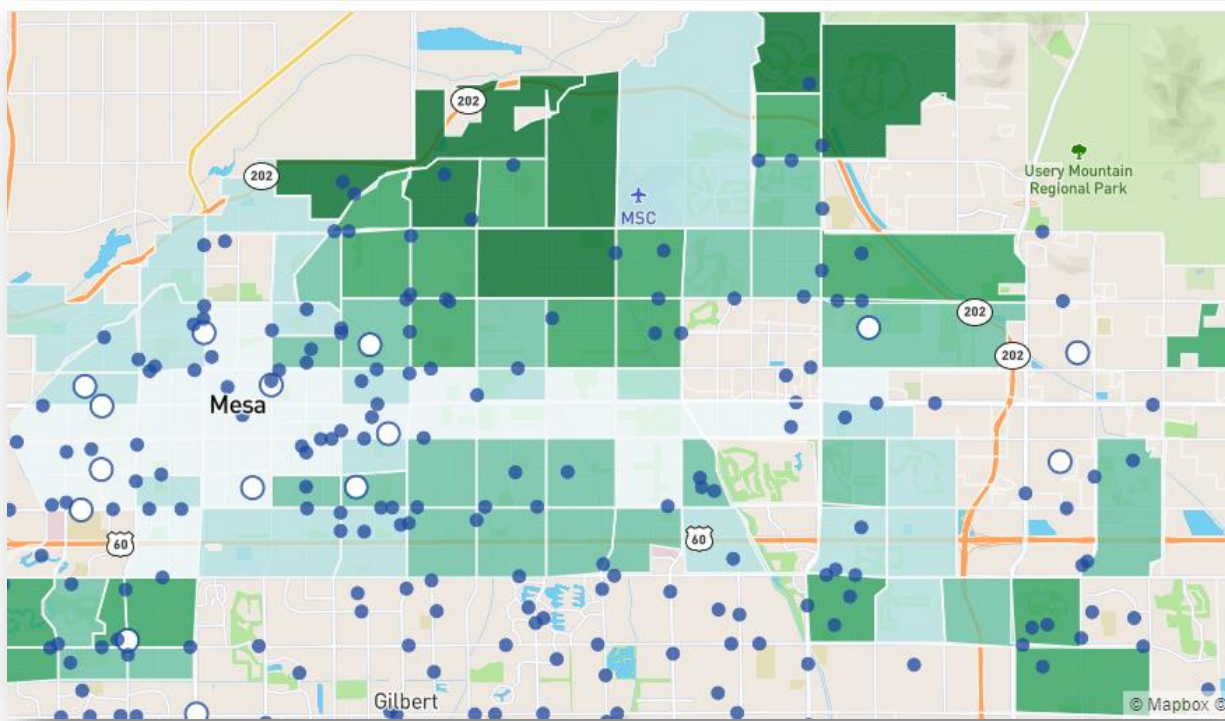


Mesa K-Ready Resource Alignment/Expansion

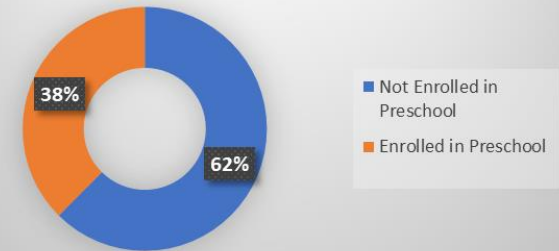
Strategic Focus Area 1 Priority Alignment: Provide equitable access to quality early learning for Mesa families.

- Impacting and Improving Access:
 - Explore community partnerships to extend resource access
 - *Examples:* Family Resource Centers, Mobile Preschool Model

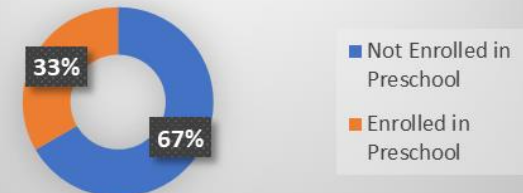
Licensed Preschool Locations



State of Arizona Preschool Enrollment



City of Mesa Preschool Enrollment



Source: U.S. Census Bureau, 2016-2020 American Community Survey 5-Year Estimates

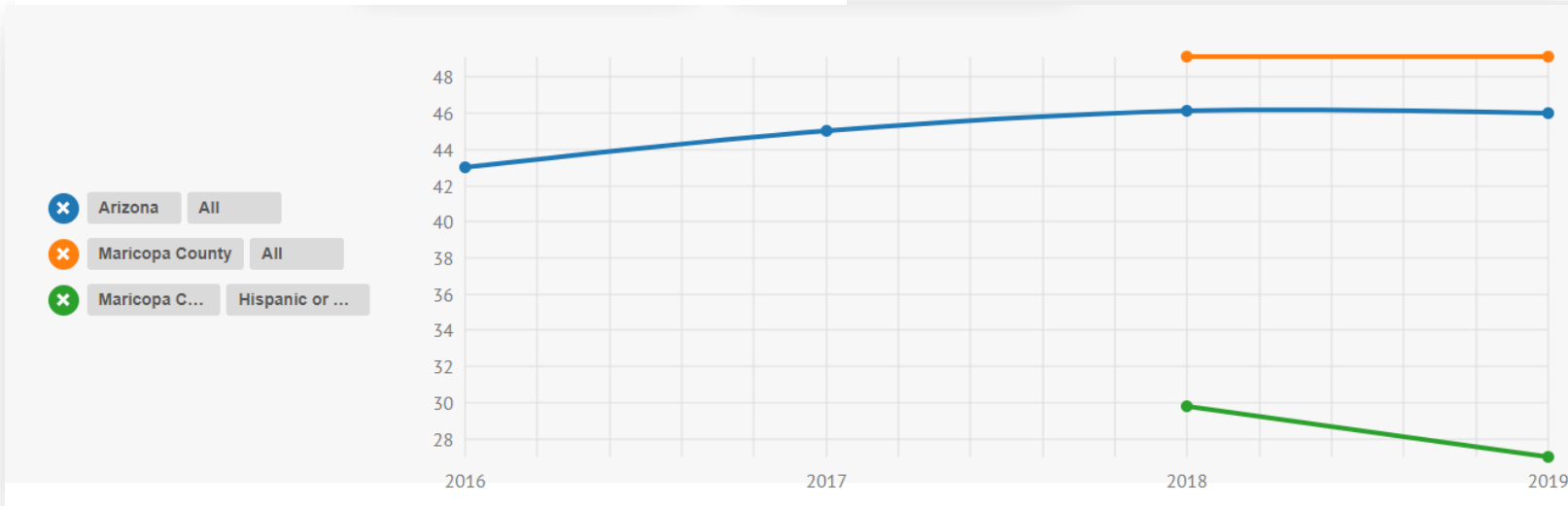
Parent Certificate/Degree Opportunity Expansion

Strategic Focus Area 2 Priority Alignment: Help students/families seek both technical and financial assistance.

Strategic Focus Area 3 Priority Alignment: Provide affordable and equitable access to upskill, train and educate Mesa's residents (students and adults) to respond to the workforce needs of Mesa's industry now and in the future.

ATTAINMENT

Percent of Arizona residents 25-64 years of age who have completed a 2- or 4-year degree or who have an active professional certificate or license.



Source: Education Forward Progress Meter - 2019, 1-Year Public Use Microdata Series Person File for Arizona, from U.S. Census Bureau. Current Population Survey, 2019

	25 and older, Associate's Degree or Higher
City of Mesa	37.5%

Source: U.S. Census Bureau, 2016-2020 American Community Survey 5-Year Estimates

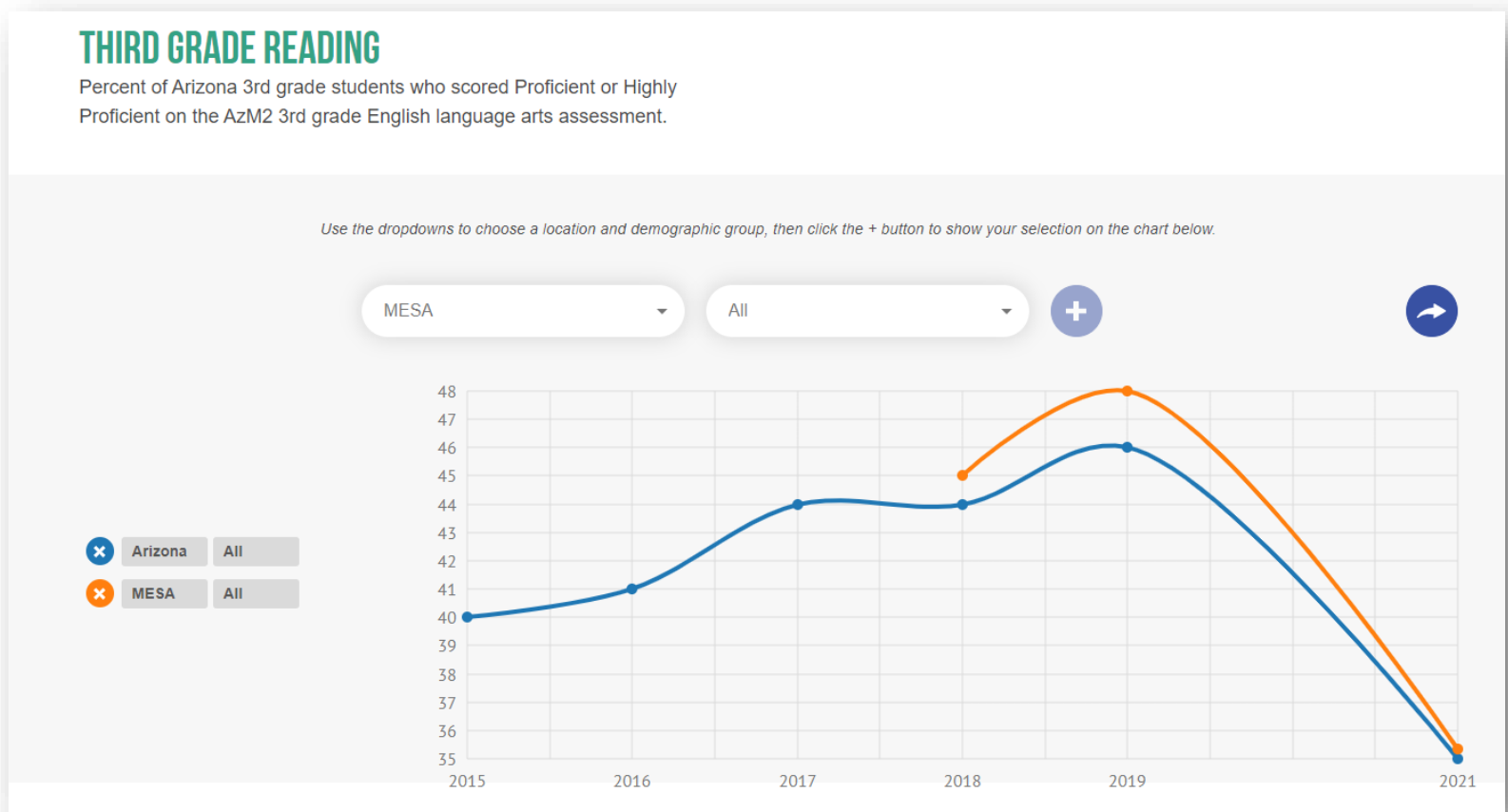
- Explore:
 - Opportunities for parents/family to continue education
 - Industry certification opportunities
- Connect to high-need industry employment opportunities

Community Literacy Initiative

Strategic Focus Area 1 Priority Alignment:

- Provide equitable access to quality early learning for Mesa families.
- Increase graduation rates in all high schools serving Mesa families.

Opportunity to help assess current programming, connect resources, fill gaps, create awareness, engage city, community, schools and businesses.



Research shows that children from low-income environments do not have the basic language skills that support reading success.

Mesa K-Ready Resource Alignment/Expansion

- Strategic Focus Area 1 Priority Alignment: Provide equitable access to quality early learning for Mesa families

Opportunity for impact:

- Family resource access
- Expanded student access

Discussion points:

- Community partnership opportunities
- Funding sources

Parent Certificate/Degree Opportunity Expansion

- Strategic Focus Area 2 Priority Alignment: Help students/families seek both technical and financial assistance.
- Strategic Focus Area 3 Priority Alignment: Provide affordable and equitable access to upskill, train and educate Mesa's residents (students and adults) to respond to the workforce needs of Mesa's industry now and in the future.

Opportunity for impact:

- Adult learners
- Workforce pathways
- AZ Achieve 60 Initiative

Discussion points:

- Funding sources
- High-need workforce areas

Community Literacy Initiative

- Strategic Focus Area 1 Priority Alignment:
 - Provide equitable access to quality early learning for Mesa families.
 - Increase graduation rates in all high schools serving Mesa families.

Opportunity for impact:

- 3rd grade literacy proficiency rate
- Kindergarten readiness
- Parent/family engagement in education

Discussion points:

- Community partnership
- Strategic planning
- Resource identification